

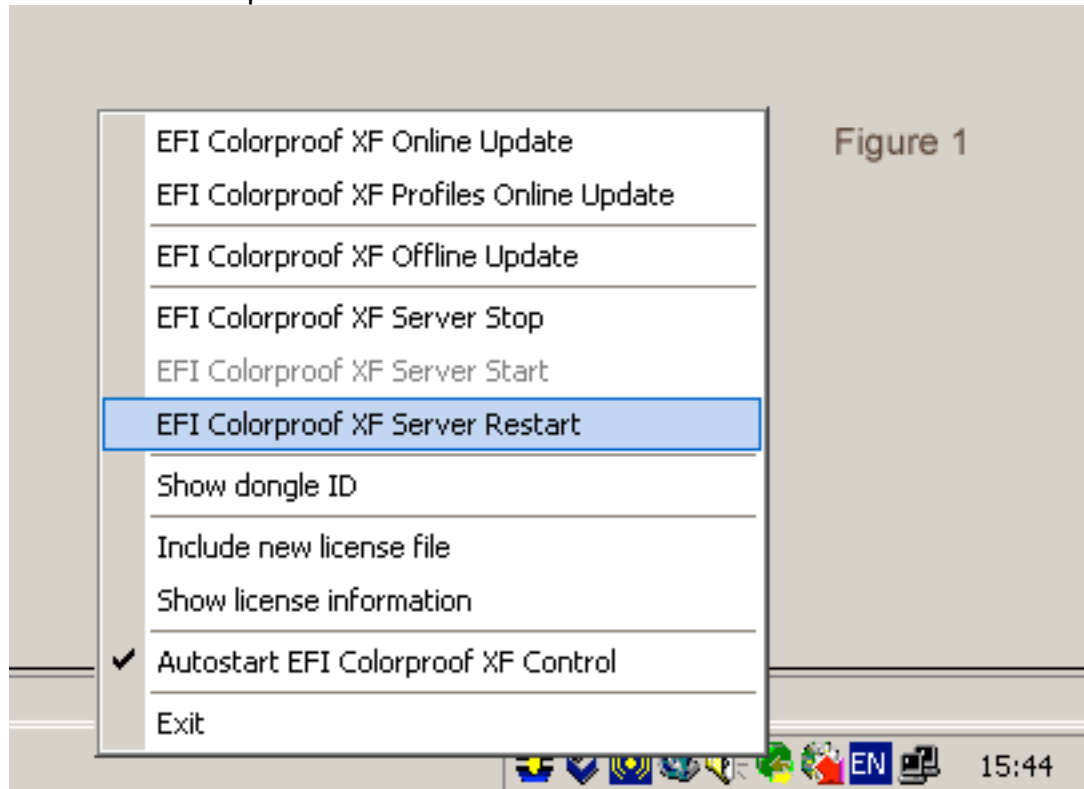
## Using proofSIGN with EFI Colorproof XF

Locate the file 'proofSIGN.tif' from the proofSIGN disc in the 'RIP Files' folder.  
Copy the file into the following folder:-

C:\Program Files\EFI\EFIXF\Server\ControlStrip

To activate the new Strip

1. Restart the server. This can be done by right clicking on the Green Globe icon in the bottom left hand corner of the screen (figure 1) and selecting the 'Server Restart' option.



2. Once the RIP has restarted, turn off the workflow that you will be using to verify your files by clicking the Green arrow icon either side of the Workflow name.

This will change it to a red square icon.

3

a) Now enter the 'Workflow Designer' and select 'Load Workflow' from the file menu.

b) Select the Workflow you have just turned off and click the 'Output' tab to reveal the output options on the left hand side of the screen.

c) Select the 'Footer' tab and tick the 'Print Control strip' and 'Color management in control strip' boxes.

Select the 'proofSIGN.tif'(Figure2)

The screenshot shows a software interface with a blue header bar labeled 'Output'. Below it are four tabs: 'Page', 'Footer', 'Separation', and 'Remote', with 'Figure 2' being the active tab. The interface is divided into two main sections: 'Job Ticket Settings' and 'Control Strip Settings'. In the 'Job Ticket Settings' section, there is an unchecked checkbox for 'Print job ticket' and a text field for 'User-defined text' containing 'Bodoni Showroom'. In the 'Control Strip Settings' section, there are two checked checkboxes: 'Print control strip' and 'Color management in control strip'. Below these is a drop-down menu currently displaying 'proofSIGN Chart.tif'.

Ensure that proofSIGN chart.tif is selected in the drop-down box.

4. Save the changes and restart the workflow in the System Manager by clicking the red square icons on either side of the Workflow name.